

Taal: engels

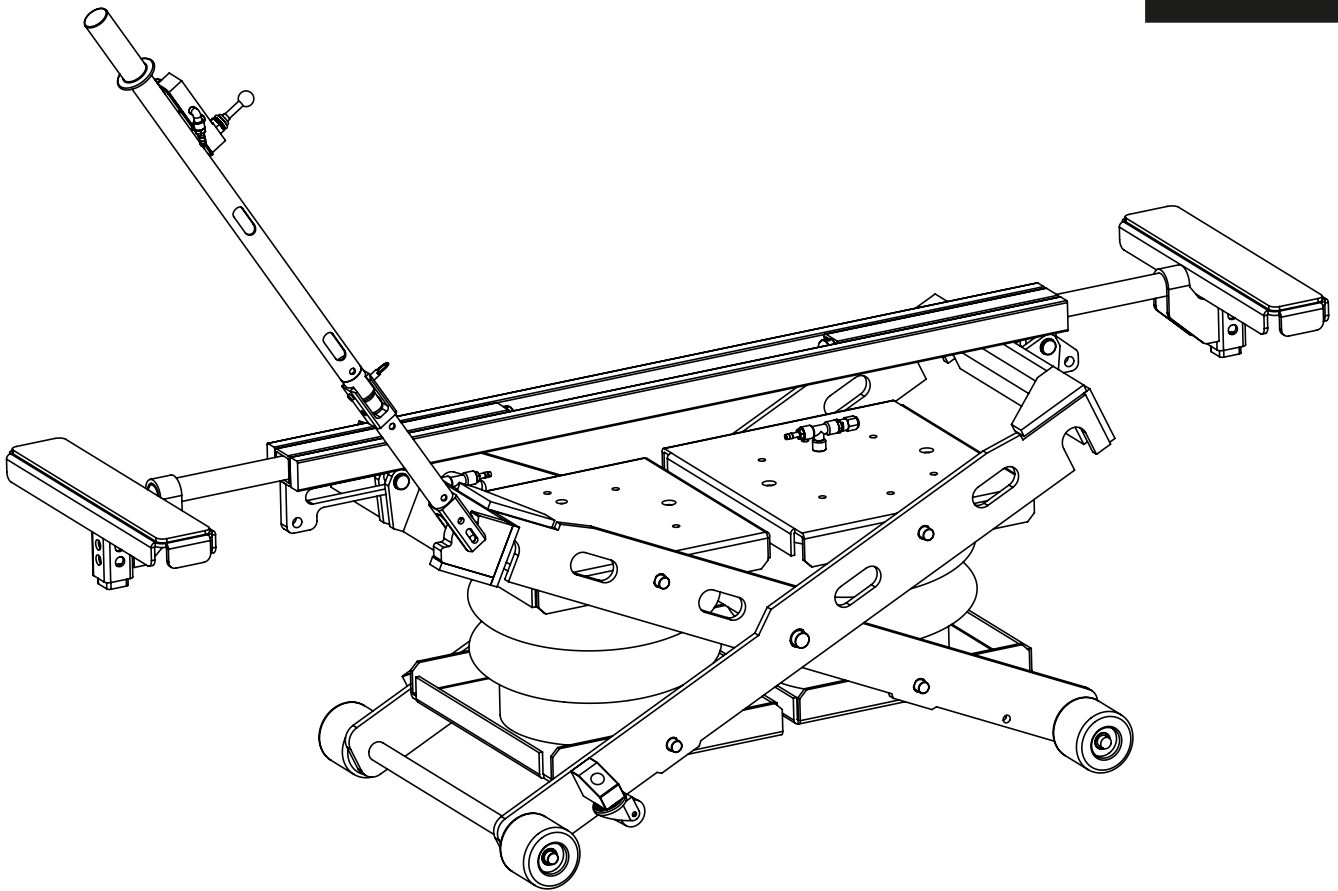


# Handleiding

GYS  
GY 053557-Spot lift Pro 2500kg

**MSH equipment**  
Appelmarkt 7  
1681 PE Zwaagdijk-Oost  
Tel: 0228-561100  
Fax: 0228-561112  
Mail: [info@msh-equipment.nl](mailto:info@msh-equipment.nl)

Website: [www.msh-equipment.nl](http://www.msh-equipment.nl)



**FR** 2-3 / 4-9 / 33-34

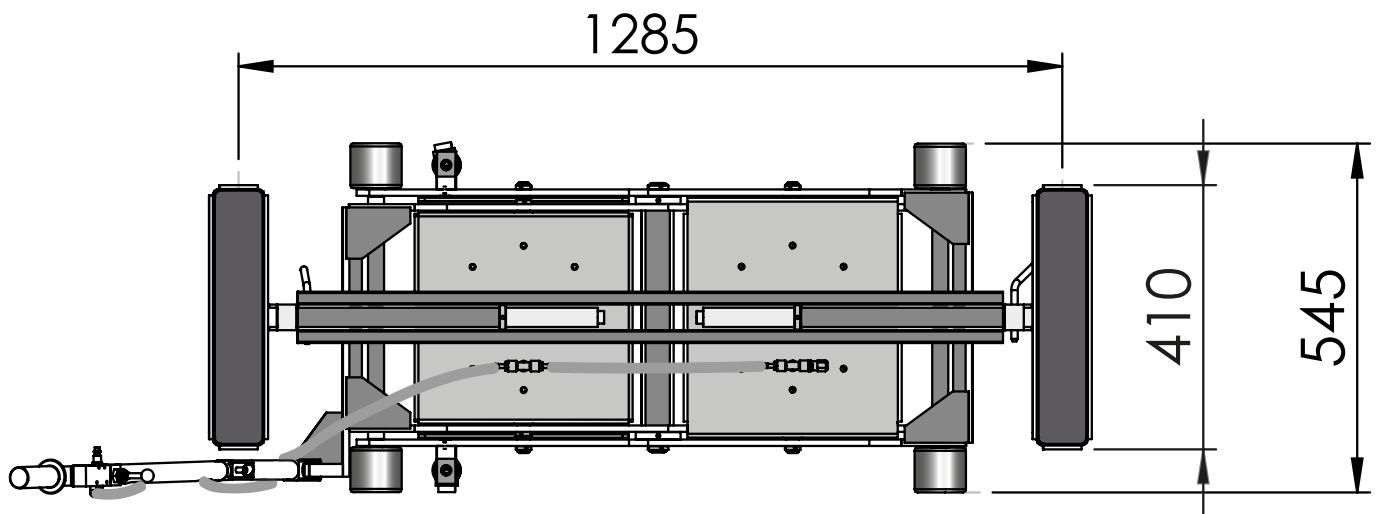
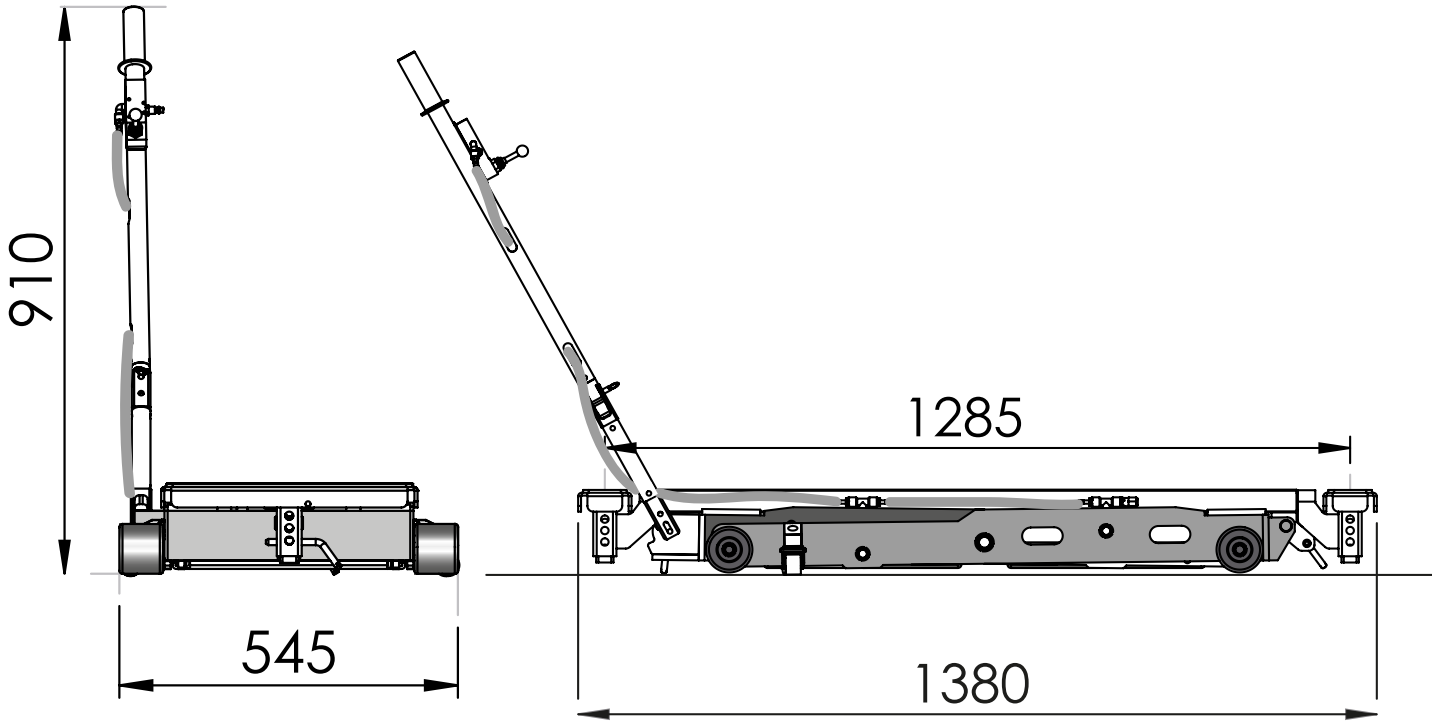
**EN** 2-3 / 10-14 / 33-34

**DE** 2-3 / 15-20 / 33-34

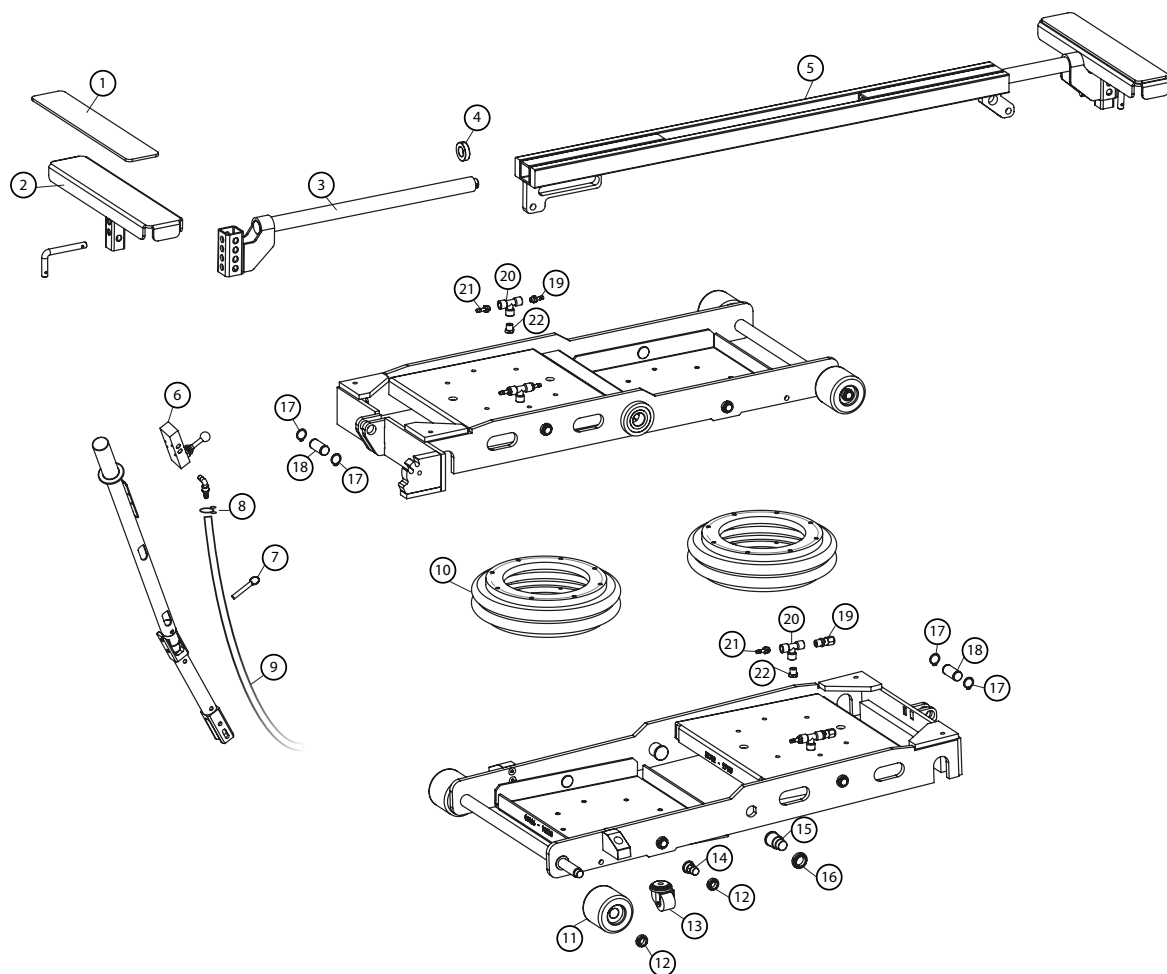
**ES** 2-3 / 21-26 / 33-34

**RU** 2-3 / 27-32 / 33-34

## **SPOT LIFT PRO**



**VUE ÉCLATÉE / EXPLODED VIEW / VISTA DETALLADA / EXPLOSIONSZEICHNUNG / ДЕТАЛИРОВКА**



1	12226	Patin caoutchouc / Rubber pad / Soporte de goma / Gummimatte / Резиновые прокладки	12	41185	Écrou à encoches M15X100 / Nut with notches M15X100 / Tuerca ranurada M15x100 / Mutter selbstsichernd M15 X 100 / Гайка с пазами M15X100
2	99175	Patin rectangle / Rectangular pad / Soporte rectangular / Schweller Auflage / Прямоугольные опорные подставки	13	71377	Roue pivot D35 H50 / Directional wheel D35 H50 / Rueda giratoria D35 H50 / Lenkrolle D35/H50 / Колесо на стержне D35 H50
3	99184ST	Bras bas de caisse / Lower body frame arm / Brazo para bajos / Teleskoparm / Плечи для порожка	14	90664ST	Axe épaulé D20 x 31 / Assist axle D20 x 31 / Eje D20 x 31 / Achsbolzen D20 x 31 / Скоба D20 x 31
4	90673ST	Bague 38x20x10 / Ring 38x20x10 / Anilla 38x20x10 / Anilla 38x20x10 / Ring 38 x 20 x 10 / Кольцо 38x20x10	15	90661ST	Axe D25 x 47 / Axle D25 x 47 / Eje D25 x 47 / Achsbolzen D25 x 47 / Ось D25 x 47
5	99183GTI	Poutre / Girder / Viga / Tragbalken / Балка	16	41184	Écrou à encoches M20x100 / Nut with notches M20X100 / Tuerca ranurada M20x100 / Mutter M20 x 100 / Гайка с пазами M20x100
6	71551	Distributeur à commande métal work 70100010000 / Distributor with metal command / Mando distribuidor metálico work 70100010000 / Steuerungsschalter (Metall Work 70100010000) / Регулирующий клапан Metal work 70100010000	17	42101	Circlips / Securing clips / Anilla seeger / Federring / Кольцевой замок
7	42099	Goupille à bille avec anneau / Pin ball with ring / Pasados bola con anilla / Kugelstift mit Ring / Шариковый штифт с кольцом	18	90662ST	Axe D20 x 46 / Axle D20 x 46 / Eje D20 x 46 / Bolzen D20 x 46 / Ось D20 x 46
8	71227	Collier de serrage 16,5 / Clamping ring 16.5 / Abrazadera 16,5 / Schlauchschelle 16,5 / Зажимный хомут 16,5	19	71561	Soupape de sécurité 9 bar / Safety valve - 9 bar / Solapa de seguridad 9 bar / Sicherheitsventil 9 bar / Предохранительный клапан 9 бар.
9	71500	Tuyau air comprimé 8 x 15 - 20 bar / Compressed air hose 8 x 15 - 20 bar / Conducto de aire comprimido 8 x 15 - 20 bar / Druckluftschlauch 8 x 15 - 20 bar / Трубка сжатого воздуха 8 x 15 - 20 бар	20	71553	Té femelle 1/4 / «Т» female 1/4 / Te hembra 1/4 / T-Stück 1/4» innen / Гнездо-тройник 1/4
10	71300	Air Jack D300 / Air Jack D300 / Air Jack D300 / Luftbalg D300 / Air Jack D300	21	55091	Douille annelée mâle G1/4 D6 / Adapter male G1/4 D6 / Pasador corrugado macho G1/4 D6 / Anschlussnippel G1/4» D6 / Кольчатый коннектор G1/4 D6
11	90659	Roue delrin / Delrin wheel / Rueda delrin / Rolle (Delrin) / Делриновое колесо	22	90655	Manchon 1/4G / Connecting sleeve 1/4G / Manguito 1/4G / Adapterstutzen 1/4G / Патрон 1/4G

This manual contains safety and operating instructions. Read it carefully before using the device for the first time and keep it in a safe place for future reference.

**DESCRIPTION**

Thank you for your choice In order to get the maximum profit of your product, please read with care the following instructions:

The SPOT LIFT PRO is a lifting product with a frame in X and is supplied by 2 air bags. This product is for car body garages to lift the back or the front of vehicles. The lifting part must be less than or equal to 2.5T.

**USE**

The SPOT LIFT PRO must never be used to lift people. The SPOT LIFT PRO must only be used indoor, sheltered from rain, wind or humidity. Product's weight and the maximal weight of the load to lift are indicated in this manual. This tool has not been made for the user to do work under the vehicle. The lack of consideration for the purpose of use can lead to important risk for the user and this will be his entire responsibility. The product must be only used for its purpose of use. The user must respect safety and prevention standards.



GYS accepts no responsibility regarding damage caused to people or material due to misuse of the SPOT LIFT PRO.

**INSTALLATION AND CONNECTIONS**

The SPOT LIFT PRO is a removable lifting tool, so it must be used on a surface with good conditions.

It must be used on a flat surface which is able to support the load. The use and the transport on a rough surface or similar precluding a good functioning are forbidden.



Operations must be done by expert or responsible operators. Before starting the installation, you must prepare a clean suitably large working area. If using a crane, respect the safety requirements of the crane. In any event, do not stand under the crane during its operation.

1 - Fixing the handle	2 - Assembling the arm

**SAFETY AREA**

For an optimal safety, it is recommended to make sure that any other objects or walls are away. Any handling work must be done with care from the operator. Nobody must stand in the safety area. In order to secure the operator, the command remote box must be situated at a distance where the operator can get away easily in case of emergency.

**INDIVIDUAL PROTECTION**

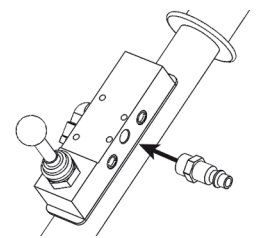
The operator must be equipped following prevention standards and must take the necessary actions to maintain safety. During manoeuvres, the operator must protect his safety and people safety. The operator must take into consideration all the recommendations quoted in this manual.

**INSTALLATION**

Once the product out of its packaging, assembled and on the floor, make a try to check the good functioning. Command remote box is fixed on the guidance lever.

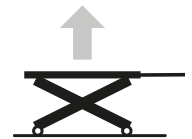
**Start and verification (attempt)**

- Screw the compressed air connection tip on the command remote box and connect it to the compressed air supply.
- Check that the pressure is correct (between 6 and 9 bar).
- Check that there is no air leakage.



**LIFTING CHECK:**

After the verifications above, push the joystick up continuously in order to raise the SPOT LIFT PRO. Once the maximum height is reached, release the joystick in order to put it back to its initial position.

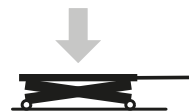


**DESCENT CHECK:**

**Before any operation, make sure that nothing is under the SPOT LIFT PRO.**

To lower the product, push the joystick down continuously. The SPOT LIFT PRO will descend to its lowest point.

If these 2 steps have been successful, the product is ready to use.

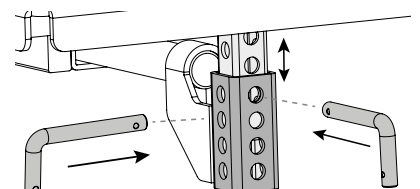


**INSTRUCTIONS**

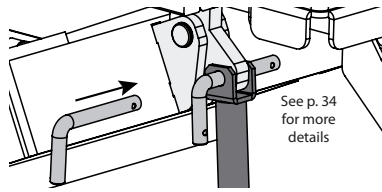
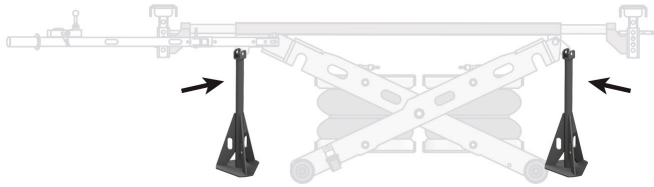
**1/ LIFTING OPERATION**

**WARNING: Before lifting a vehicle, make sure that the hand brake is released, that the vehicle is on neutral and that tyres pressure is enough to maintain the vehicle in balance.**

Position the SPOT LIFT PRO under the vehicle, centre it, for vehicle width. Extend the arms until that the rubber pads are in position for the jack. Pads are height adjustable. Fix the height with the small bar in order to be as close as possible to the lowest part of the vehicle. Once the tool is positioned operate the lift:

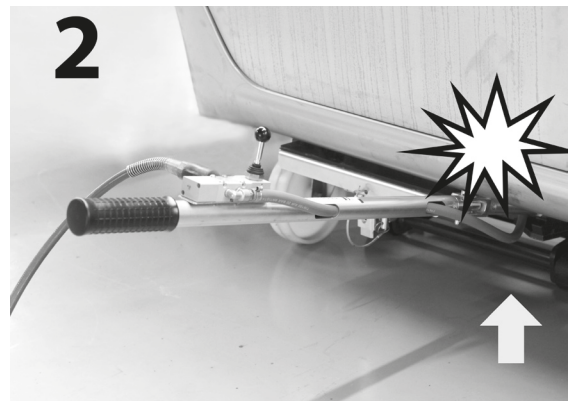
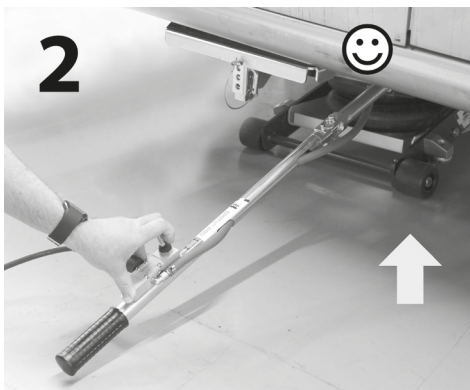
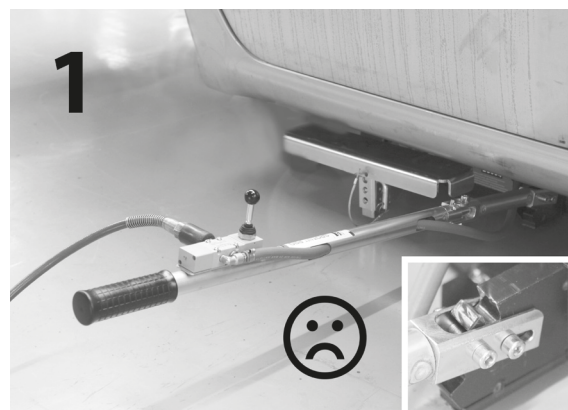
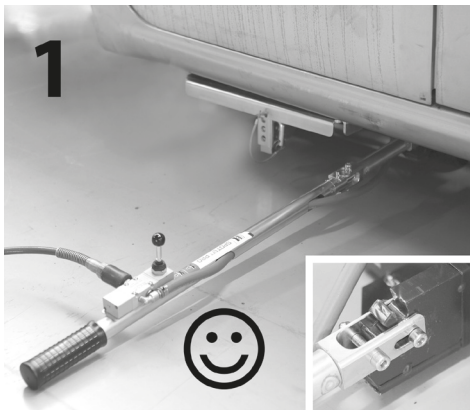
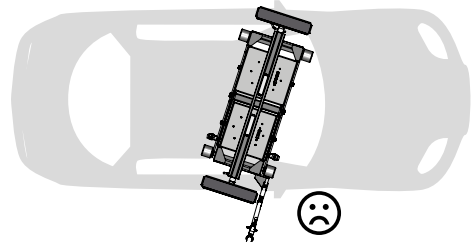
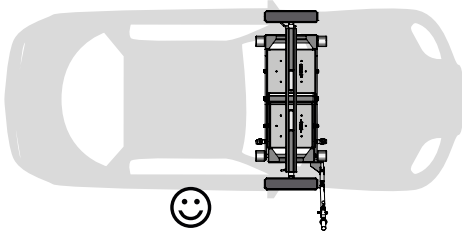
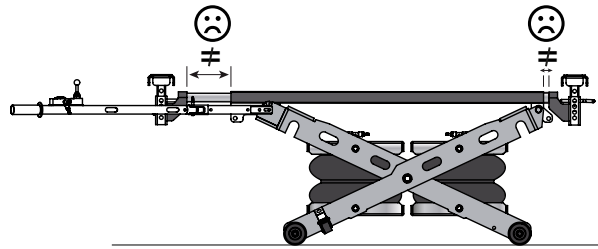
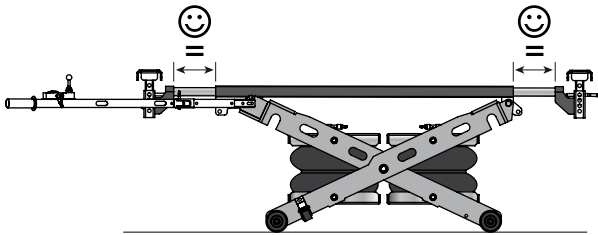


- Check that nothing very bulky is inside the safety area.
- Push continuously the joystick up
- Once you have reached the height you wish, stop pushing the joystick and the SPOT LIFT PRO will stop to go up.
- Put the 2 safety links in place to support the vehicle immediately after lifting. (these must not be put in place from under the vehicle)



**YES**

**NO** ⚠️



GYS accepts no responsibility in case of damage caused if the operator does not follow the GYS recommendations.

## 2/ POSITION

Once the operation is done and before starting your work on the vehicle, make sure you have checked the stability of the vehicle on the SPOT LIFT PRO.

## 3/ LOWERING THE PRODUCT

Take the safety links off.

To get the product down, push down. Every time, the joystick comes back to its initial position in order to make sure that all the operations are intentional.



Before lowering the lift always make sure that no electric cable or objects can be possibly be caught in the scissors.

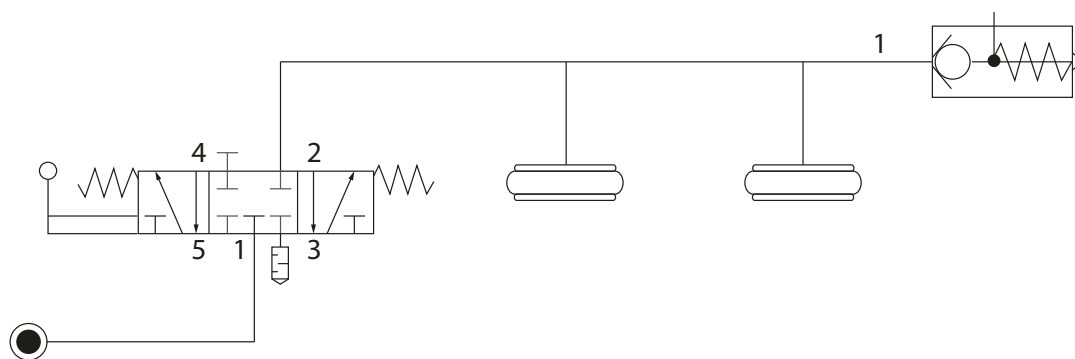
## SAFETY MEASURE

- The SPOT LIFT PRO must be used by trained and authorized people. Moreover, they must have read this user manual. It must be read carefully before using the SPOT LIFT PRO. It is forbidden to lift people with this product.
- Check the load, especially when it is going up, while ensuring there is no anomaly. If any problem happens, the SPOT LIFT PRO must go down as soon as possible and place the vehicle correctly.
- Clean the vehicle supporting surface,
- This product is a lifting tool only. After lifting the vehicle, it must be supported by safety links.
- Do not put pads on an area next to airbags sensors.
- Do not put pads on an area with plastic surface.
- The tool is equipped with a safety valve which opens itself when the pressure inside the airchambers is too high (above 9 bar)
- Check that the input pressure is between 6 and 9 bar. Make sure that the input pressure does not exceed 10 bar.
- Systematically lower the load down to the ground if leaving the device for a long period of time.
- The vehicle weight must not exceed 2500 kg.
- The only power supply for the SPOT LIFT PRO is compressed air. Consequently, causes for potential failures are very low.
- The product must not be used in a potential explosive atmosphere and it is not recommended to work near a heat source (risk of explosion of the air chambers).
- It is forbidden to use the product on a boat/ship (stability problem).
- It is forbidden to use spare parts which have not been certified by GYS.
- Do not lift other loads which are not recommended in the use of the SPOT LIFT PRO.
- If you have any doubt about the resistance of the car body (rust) - Do not lift the vehicle.
- Do not use it in case of important dampness. This product must not be submerged. The infiltration of water inside the product may damage the pneumatic circuit.
- You must not make any change on the product.
- Do not use the product if people are inside the vehicle or leaned on it.
- Do not move or shake the load whilst in position on the SPOT LIFT PRO.

**ТЕХНИЧЕСКИЕ ХАРАКТЕРИСТИКИ**

Максимальная грузоподъемность	2500 кг
Максимальная высота подъема	60 см
Максимальная высота в неразложенном состоянии	14 см
Ширина подъемника	60 см
Длина подъемника	140 см
Вес с аксессуарами	120 кг
Рекомендованное давление воздуха	8 бар
Минимальное давление воздуха	6 бар
Максимальное давление воздуха	9 бар
Минимальный расход компрессора	200 литров/ мин

**СИСТЕМА ПНЕВМАТИЧЕСКОГО ПРИВОДА**



**ATTESTATION DE CONFORMITÉ**

GYS atteste que l'engin SPOT LIFT PRO est conforme à la directive 98/37/CE, et par conséquent respecte les normes suivantes :

- NF EN 1494+A1
- EN 292
- EN 626-1

Date de marquage CE : 2016.

**DECLARATION OF COMPLIANCE**

GYS certifies that the SPOT LIFT PRO conforms to the directive 98/37/CE and respects the following standards:

- NF EN 1494+A1
- EN 292
- EN 626-1

Date CE : 2016.

**KONFORMITÄTSERKLÄRUNG**

GYS erklärt, dass die Hebebühne SPOT LIFT PRO nach Richtlinie 98/37/CE hergestellt wurde und daher mit den erweiterten Normen übereinstimmt:

- NF EN 1494+A1
- EN 292
- EN 626-1

CE-Kennzeichnung: 2016.

**DECLARACIÓN DE CONFORMIDAD**

GYS declara que el Spot Lift Pro se ajusta a la directiva 98/37/CE, y por consiguiente cumple las normas siguientes:

- NF EN 1494+A1
- EN 292
- EN 626-1

Fecha de marcado de CE : 2016.

**ДЕКЛАРАЦИЯ СООТВЕТСТВИЯ**

GYS заявляет, что подъемник SPOT LIFT PRO произведен в соответствии с директивой Евросоюза 98/37/CE и, следовательно, соблюдает следующие нормы :

- NF EN 1494+A1
- EN 292
- EN 626-1

Дата нанесения маркировки CE : 2016.

**17/11/2016**  
**Société GYS**  
**134 BD des Loges**  
**53941 Saint-Berthevin**  
**France**

**Nicolas BOUYGUES**  
Président Directeur Général

*Nicolas Bouygues*

**MONTAGE DES GOUPILLES DE SÉCURITÉ / SAFETY PIN ASSEMBLY / MONTAGE DER SICHERUNGSSTIFTE / MONTAJE DE LOS PASADORES DE SEGURIDAD / СБОРКА СТЕРЖНЕЙ БЕЗОПАСНОСТИ**

